

What should I already know?

Key vocabulary

**Decibel** - a measure of how loud a sound is

**Frequency** - a measure of how many times per second the sound wave cycles

**Pitch**—how high or low a sound is

**sound waves** - invisible waves that travel through air, water, and solid objects as vibrations

**Source** - where something comes from

**Transmit** - to pass from one place or person to another travel how something moves around.

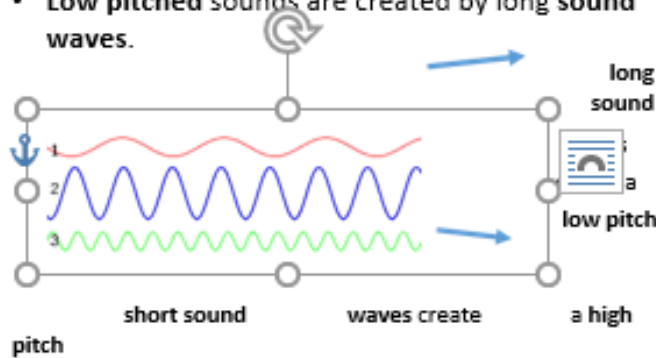
**Vibrations** - Invisible waves that move quickly.

**Volume**—how loud or quiet a sound is

Diagrams

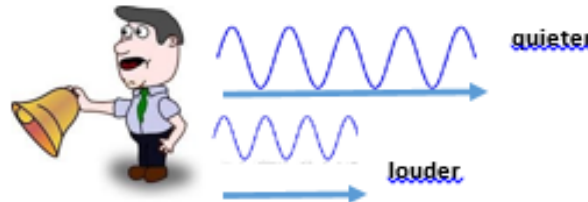
**Pitch:**

- **High pitch** sounds are created by short sound waves.
- **Low pitched** sounds are created by long sound waves.



**Volume:**

- The closer you are to the **source** of the sound, the **louder** the sound will be.
- The further away you are from the **source** of the sound, the **quieter** the sound will be.



How is a sound made?

When objects **vibrate**, a sound is made.

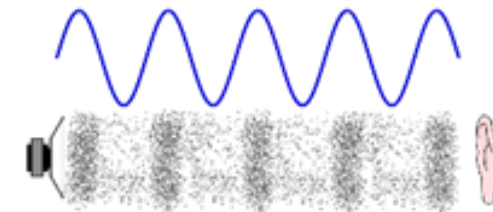
The **vibration** makes the air around the object **vibrate** and the air **vibrations** enter your ear.

These are called **sound waves**.

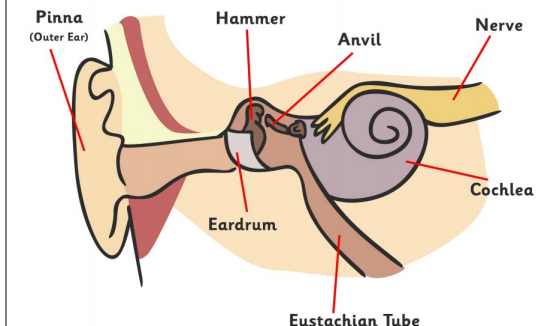
If an object is making a sound, a part of it is **vibrating**, even if you cannot see the **vibrations**.

How do sounds travel?

**Sound waves** travel through a **medium** (such as air, water, glass, stone, and brick).



The Ear



# Topic— Sound—Passport to Europe

<b>Question 1— What are vibrations?</b>	<b>Start of unit</b>	<b>End of unit</b>	<b>Question 4 — How is a sound made?</b>	<b>Start of unit</b>	<b>End of unit</b>
A .When an object moves			A. When objects get new batteries		
B .A loud noise			B. When objects fall		
C .Invisible waves that move quickly.			C. When objects vibrate,		
D .Something you see in water			D .When objects move		
<b>Question 2 - How is a high pitch sound created?</b>	<b>Start of unit</b>	<b>End of unit</b>	<b>Question - 5How does sound travel to the ear?</b>	<b>Start of unit</b>	<b>End of unit</b>
A . High pitch sounds are created by short sound waves			A. Sound waves travel through the air to the ear		
B . High pitch sounds are created by long sound waves			B. Sound waves travel through your clothes to the ear		
C .High pitch sounds are created by a mixture of short and long sound waves			D. Sound waves travel through the floor first then to the ear		
<b>Question 3 - Which bone in the ear looks like a snails shell?</b>	<b>Start of unit</b>	<b>End of unit</b>	<b>Question 6 - The further away from the source of a sound the _____? _____the sound will be.</b>	<b>Start of unit</b>	<b>End of unit</b>
A. Eustachian			A. Louder		
B. Hammer			B. Same volume		
C. Anvil			C. Quieter		
D. Cochlea					